

ServoMix Water supply unit for open tank dosing units

ServoMix-L:



ServoMix-M:



ServoMix-H:



ServoMix-HH:

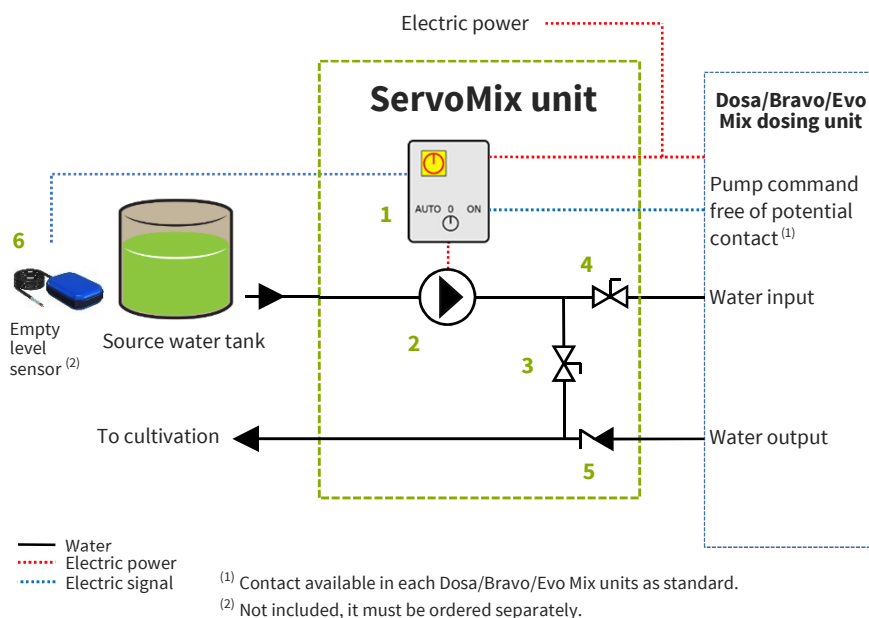


ServoMix is a water supply unit for Bravo/Evo mix series dosing units
ServoMix is available in four sizes (L, M, H and HH) based on the dosage unit size :

ServoMix type	Dosing unit type
ServoMix-L	BravoMix-L, EvoMix-L
ServoMix-M	BravoMix-M, EvoMix-M
ServoMix-H	BravoMix-H, EvoMix-H
ServoMix-HH	BravoMix-HH, EvoMix-HH

ServoMix is designed to be installed directly on the side of its dosing unit, which input and output ports are directly coupled with ServoMix in the right position

ServoMix is equipped with a bypass valve and a non-return valve so that the crops can be directly connected in the event of a failure of the dosing unit.



Legenda:

- 1 Electric panel
- 2 Pump
- 3 Emergency by-pass manual valve
- 4 Dosing unit feeding manual valve
- 5 Not return valve
- 6 Tank empty level sensor (to protect ServoMix unit in case of water missing)



The installation of this is sensor is highly recommended! (code 303003008)

SERVOMIX base, frequency 50 Hz, electric power supply 400VAC three-phases + neutral

SIGLA	CODICE		Total power KW
SERVOMIXV3-L-P1-5-40T3N-D	301111002	SERVOMIX-L with EBARA pump 3M32-160/2.2	2.3
SERVOMIXV3-M-P2-5-40T3N-D	301111001	SERVOMIX-M with EBARA pump 3M50-125/3.0	3.1
SERVOMIXV3-H-P3-5-40T3N-P	301111003	SERVOMIX-H with EBARA pump 3M65-160/7.5	7.6
SERVOMIXV3-HH-P4-5-40T3N-P	301111004	SERVOMIX-HH with EBARA pump 3M65-160/7.5	7.6

ServoMix base is supplied complete of:

- Electric panel for pump's command, with general switch, 0-auto-man pump selector and related lights.
- 1 input for pump command (to be connected on terminals 1 and 2 of the dosing unit)
- 1 output for alarm signaling.

SERVOMIX – Specifications

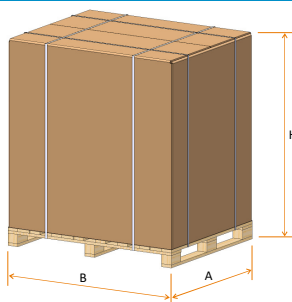
SERVOMIX – SPECIFICATIONS:

	L	M	H	HH
Ø water inlet	75 mm female PVC solvent cement	90mm female PVC solvent cement	125mm flange	140mm flange
Ø water outlet	63 mm female PVC solvent cement	90mm female PVC solvent cement	125mm flange	125mm flange
Min. / Max. water temperature	5 °C (41 °F) / 30 °C (86 °F)			
Impurities in the water	Max.500 µm, Max.100g/m ³			
Ingress protection	IP55 (NEMA-12)			
Electric supply voltages Min/Max limit and pump command type ⁽¹⁾	SERVOMIXV3-*-*- [1]-[2] Voltage: [1]=40T3N: 360VAC / 490VAC Pump command: [2]=D:Direct, P=Soft starter			
Operative max. humidity	85 %			
Operative min. / max. air temperature	5 °C (41 °F) / 40 °C (104 °F)			



⁽¹⁾ Exceeding these values results in damaging.

SERVOMIX – STANDARD PACKAGING PALLET + CARTON BOX:



	L	M	H	HH		
Length (A):	1200 mm	1800 mm	1800 mm	1800 mm	Stackable:	NO
Width (B):	800 mm	1500 mm	1500 mm	1500 mm	Minimum temperature:	7°C
Height (H):	1700 mm	1830 mm	1830 mm	1830 mm	Maximum temperature:	40°C
					Maximum humidity:	60 %



Do not expose to outside weather, direct sun radiation, salt fog and vibration.
In case of sea transportation or other harsh conditions we recommend the use of a wooden box + barrier bag packaging (see below)

SERVOMIX – WOODEN BOX + BARRIER BAG:



	L	M	H	HH		
Length (A):	1370 mm	1370 mm	1770 mm	1770 mm	Stackable:	NO
Width (B):	1170 mm	1670 mm	1670 mm	1670 mm	Minimum temperature:	7°C
Height (H):	1830 mm	1830 mm	2030 mm	2030 mm	Maximum temperature:	40°C
Code:	IMB0124	IMB0125	IMB0129	IMB0129		

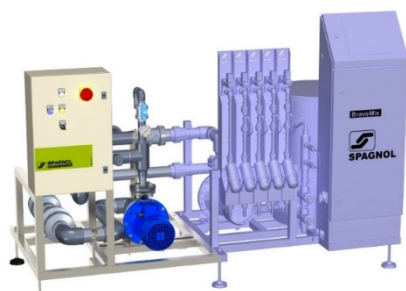
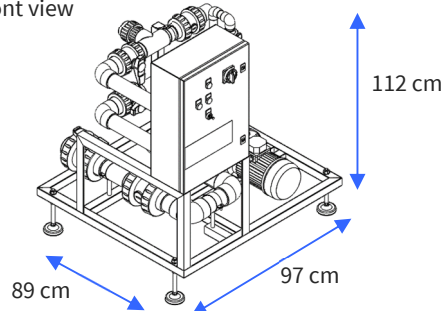


Do not expose to outside weather, direct sun radiation and vibration.

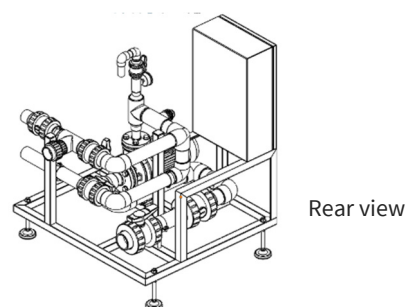
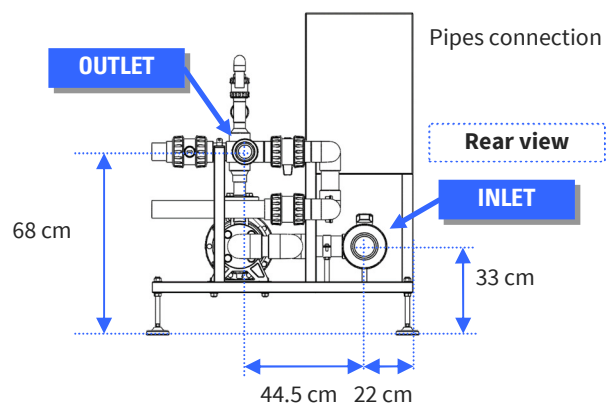
SERVOMIX – DIMENSION AND INPUT/OUTPUT POSITION:

SERVOMIX-L:

Overall dimension,
front view

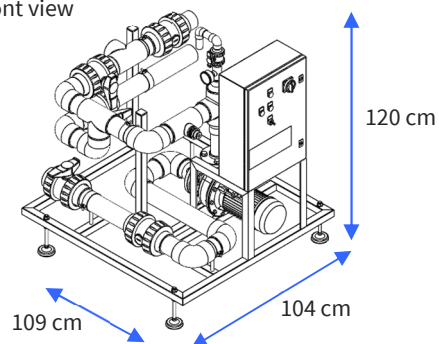


Servomix coupled with open tank dosing unit

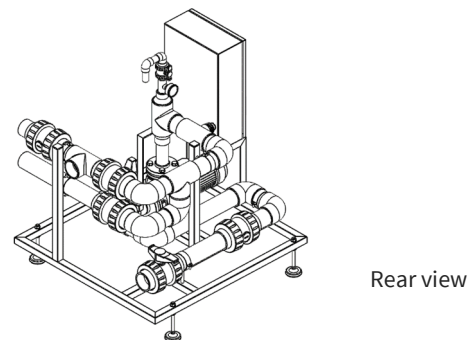
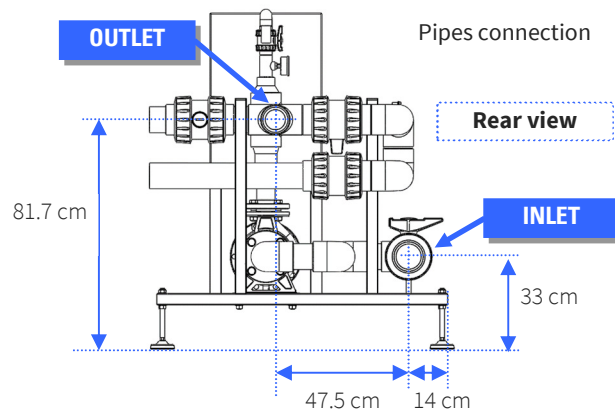


SERVOMIX-M:

Overall dimension,
front view



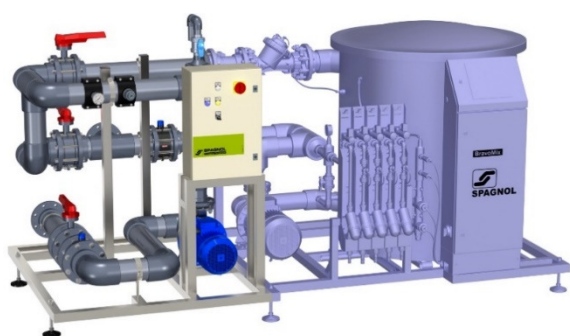
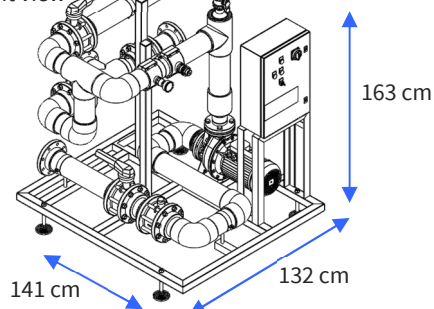
Servomix coupled with open tank dosing unit



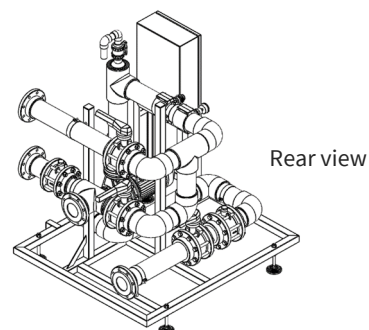
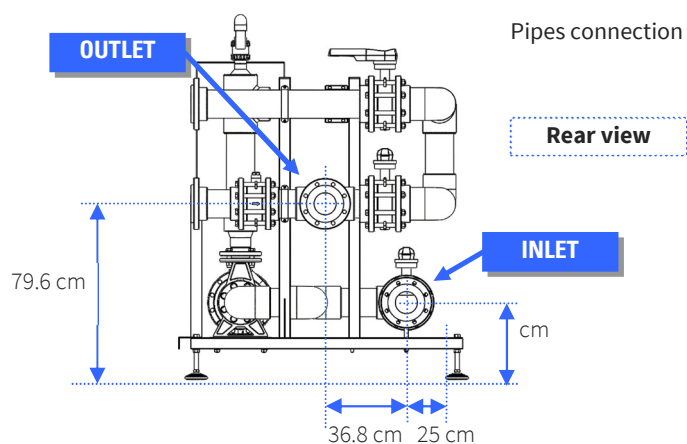
SERVOMIX – DIMENSION AND INPUT/OUTPUT POSITION:

SERVOMIX-H:

Overall dimension,
front view

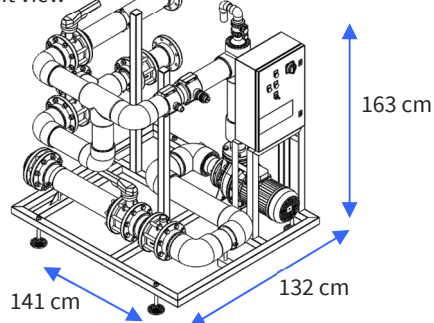


Servomix coupled with open tank dosing unit



SERVOMIX-HH:

Overall dimension,
front view



Servomix coupled with open tank dosing unit

